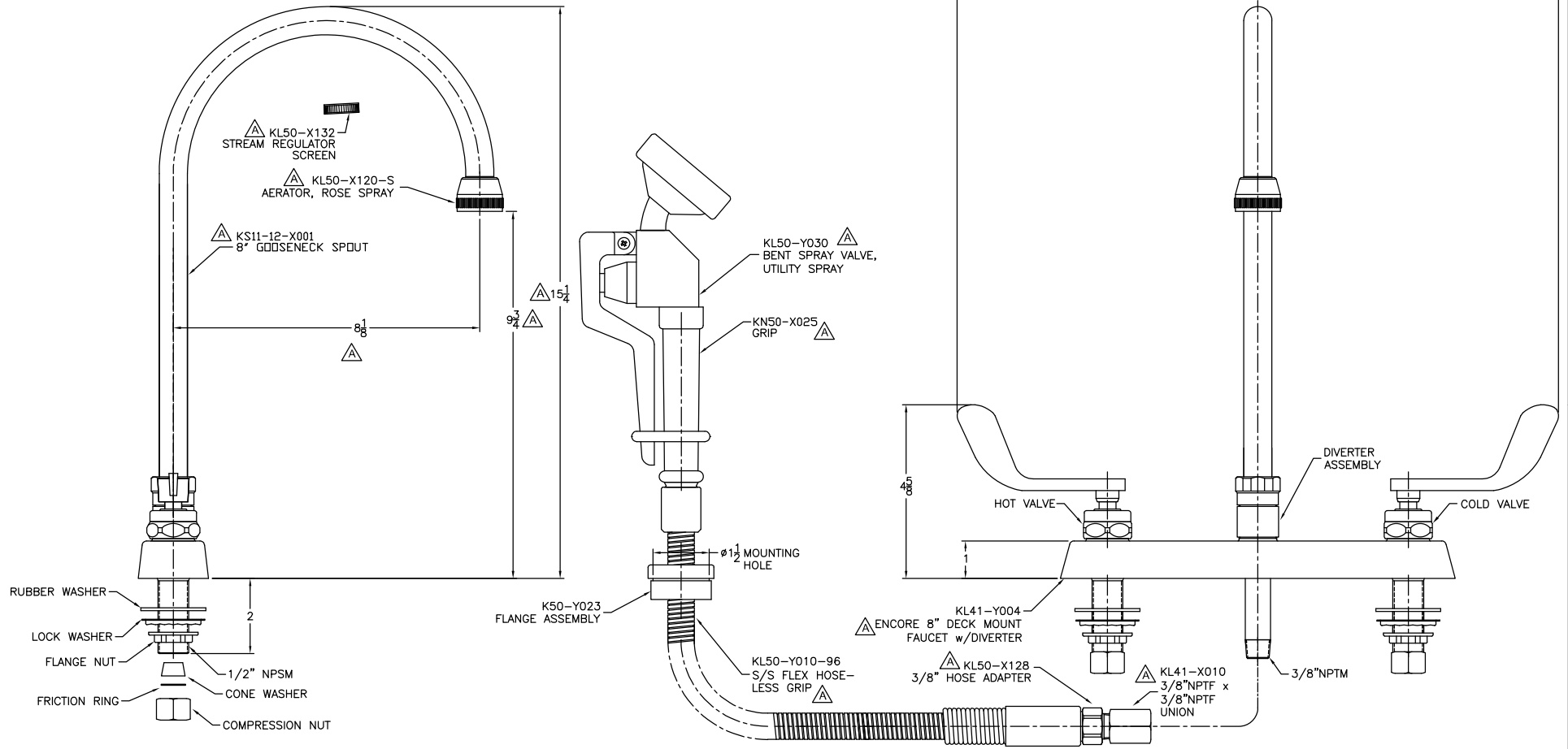


NOTE:

1. DIMENSIONS ARE IN INCHES AND [MILLIMETERS].
2. DIMENSIONS SHOWN ARE FOR REFERENCE ONLY AND NOT TO BE USE FOR PRE-PLUMBING.
3. ANSI/ASME SINK STANDARDS TYPICALLY REQUIRE 1-1/8" OR 1-1/2" DIA FAUCET MOUNTING HOLES. A MINIMUM 7/8" DIA HOLE IS REQUIRED FOR 1/2" NPSM INLET SHANK CLEARANCE.

| REVISION HISTORY | | | | |
|------------------|-------|----------|---|------|
| REV. | ECN # | DATE | DESCRIPTION | ENG. |
| A | 1823 | 11/26/19 | SEE ECN FORM FOR DESCRIPTION OF CHANGES | RO |



| <p>PROPRIETARY AND CONFIDENTIAL THE INFORMATION CONTAINED IN THIS DRAWING IS THE SOLE PROPERTY OF COMPONENT HARDWARE GROUP. ANY REPRODUCTION IN PART OR AS A WHOLE WITHOUT THE WRITTEN PERMISSION OF COMPONENT HARDWARE GROUP IS PROHIBITED.</p> | <p>UNLESS OTHERWISE SPECIFIED:</p> <table border="1"> <tr> <th>TOLERANCES:</th> <th>IN</th> <th>MM</th> </tr> <tr> <td>TWO PLACE DECIMAL (+)</td> <td>.01</td> <td>.25</td> </tr> <tr> <td>THREE PLACE DECIMAL (+)</td> <td>.005</td> <td>.127</td> </tr> <tr> <td>ANGULAR (+)</td> <td colspan="2">1°</td> </tr> </table> | TOLERANCES: | IN | MM | TWO PLACE DECIMAL (+) | .01 | .25 | THREE PLACE DECIMAL (+) | .005 | .127 | ANGULAR (+) | 1° | | <p>THIRD ANGLE PROJECTION</p> | <p>B SIZE</p> | <p>MATERIAL: SEE PART DRAWINGS</p> | <p>TITLE: 8" DECK MOUNT VETERINARY FAUCET W/ 8" SWIVEL GOOSENECK SPOUT, COMPRESSION VALVES, 96" PRE-RINSE HOSE, BENT VALVE UTILITY SPRAY AND 4" WRIST HANDLES</p> | <p>COMPONENT HARDWARE 1890 SWARTHMORE AVE. LAKEWOOD, N.J. 08701</p> |
|--|--|--------------------|------------------------|---|-----------------------|---------------------|-----|-------------------------|------|------|-------------|----|--|-------------------------------|---------------|------------------------------------|---|---|
| | TOLERANCES: | IN | MM | | | | | | | | | | | | | | | |
| | TWO PLACE DECIMAL (+) | .01 | .25 | | | | | | | | | | | | | | | |
| THREE PLACE DECIMAL (+) | .005 | .127 | | | | | | | | | | | | | | | | |
| ANGULAR (+) | 1° | | | | | | | | | | | | | | | | | |
| <p>GEOMETRIC TOLERANCING PER ASME Y14.5 M</p> | <p>FINISH: SEE PART DRAWINGS</p> | <p>WEIGHT: N/A</p> | <p>PART #: 1005144</p> | <p>MODEL #: 804.0006.83 K41-8301-964A</p> | <p>REV. A</p> | | | | | | | | | | | | | |
| <p>MANUFACTURING DRAWING</p> | <p>DRAWN RO</p> | <p>NAME RO</p> | <p>DATE 3/25/11</p> | <p>LOCATION: LKWD</p> | <p>SCALE: NTS</p> | <p>SHEET 1 OF 1</p> | | | | | | | | | | | | |