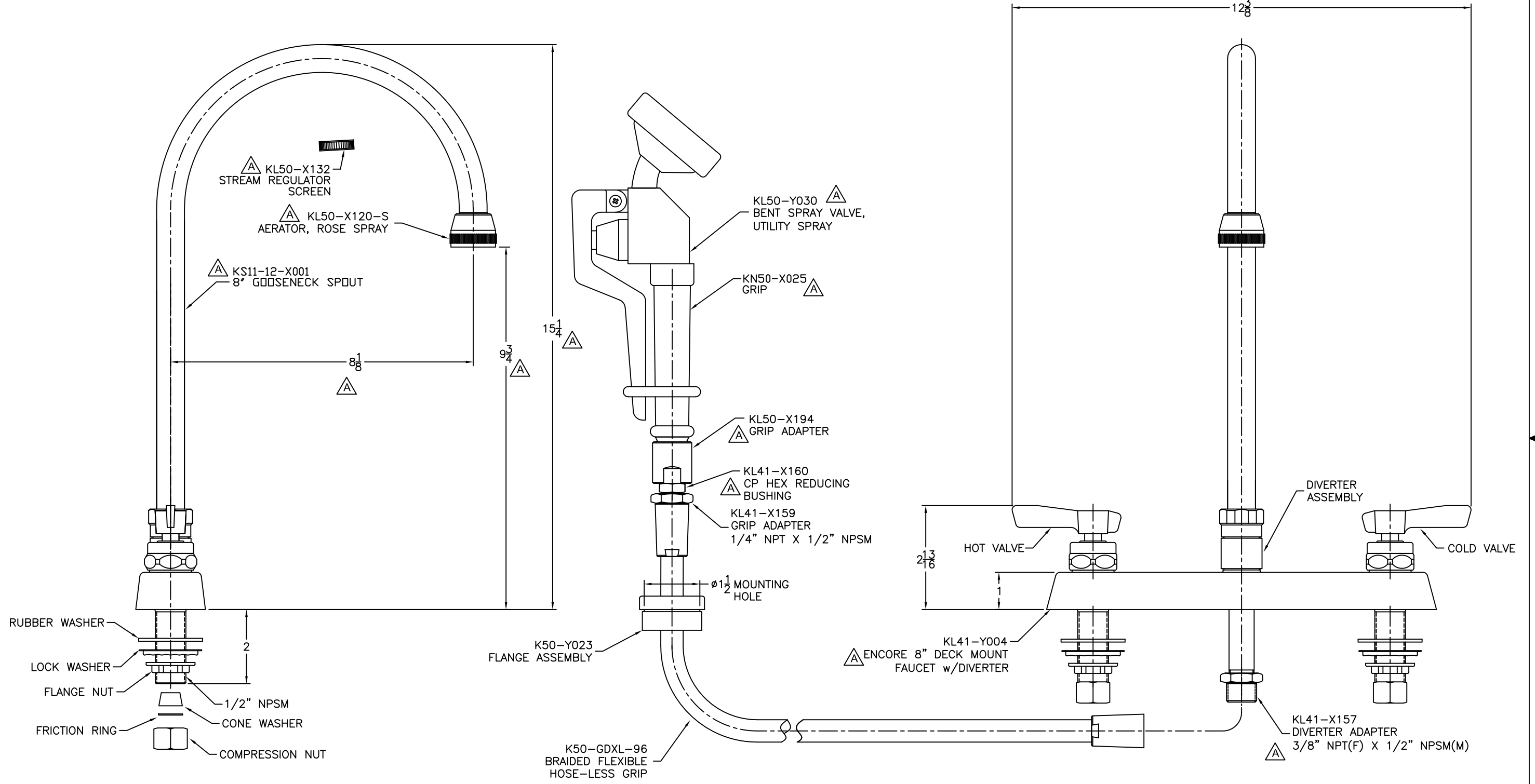


NOTE:

1. DIMENSIONS ARE IN INCHES AND [MILLIMETERS].
2. DIMENSIONS SHOWN ARE FOR REFERENCE ONLY AND NOT TO BE USE FOR PRE-PLUMBING.
3. ANSI/ASME SINK STANDARDS TYPICALLY REQUIRE 1-1/8" OR 1-1/2" DIA FAUCET MOUNTING HOLES. A MINIMUM 7/8" DIA HOLE IS REQUIRED FOR 1/2" NPSM INLET SHANK CLEARANCE.

REVISION HISTORY				
REV.	ECN #	DATE	DESCRIPTION	ENG.
A	1823	11/26/19	SEE ECN FORM FOR DESCRIPTION OF CHANGES	RO



Encore



COMPONENT HARDWARE
1890 SWARTHMORE AVE.
LAKEWOOD, N.J. 08701

PROPRIETARY AND CONFIDENTIAL
THE INFORMATION CONTAINED IN THIS DRAWING IS THE SOLE PROPERTY OF COMPONENT HARDWARE GROUP. ANY REPRODUCTION IN PART OR AS A WHOLE WITHOUT THE WRITTEN PERMISSION OF COMPONENT HARDWARE GROUP IS PROHIBITED.

UNLESS OTHERWISE SPECIFIED:		
TOLERANCES:	IN	MM
TWO PLACE DECIMAL (±)	.01	.25
THREE PLACE DECIMAL (±)	.005	.127
ANGULAR (±)	1°	
GEOMETRIC TOLERANCING PER: ASME Y14.5 M		



MATERIAL:
SEE PART DRAWINGS

FINISH:
SEE PART DRAWINGS

TITLE: 8" DECK MOUNT VETERINARY FAUCET W/ 8" SWIVEL GOOSENECK SPOUT, COMPRESSION VALVES, 96" BRAIDED FLEX HOSE, BENT VALVE UTILITY SPRAY AND LEVER HANDLES

WEIGHT:
N/A

PART #:
1005155

MODEL #:
804.0138.00

K41-8GDX-2348

DRAWN	NAME	DATE	LOCATION	SCALE	SHEET
RO	RO	12/12/12	LKWD	NTS	1 OF 1