



## CASTER BASE

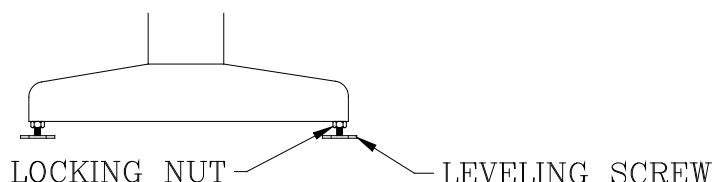
Mounting your existing table onto casters will add mobility to your Shor-Line lift and pedestal base surgery table.

There are two heavy-duty plated steel caster bars that attach easily to existing leveling screws on the table base, raising the table height approximately one inch from the floor. All four casters are equipped with brake locks to stop table movement.

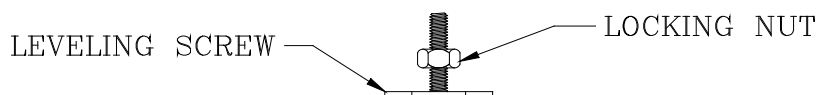
To install your casters onto the table base, follow the steps below and convert your table base into a mobile base.

### Installation:

- 1) Turn the table onto its side (note: lay down a cloth so the sides of the table and base do not get scratched) and remove the four leveling screws with locking nuts from the base.

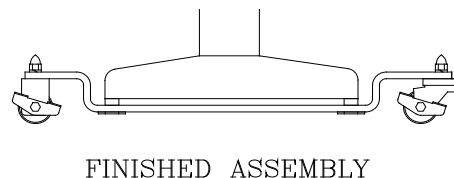
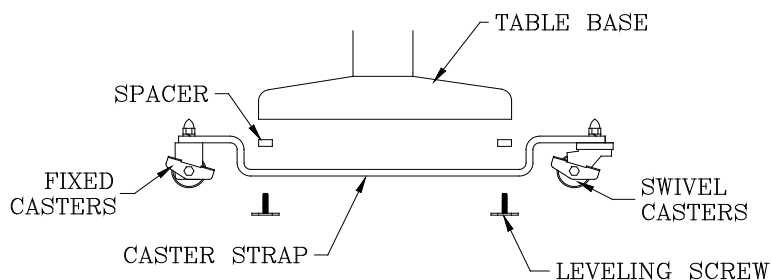


- 2) Unscrew the lock nuts from the leveling screws.



- 3) Remove the caster straps from the package and install onto the base of the table with the leveling screws that were removed in step one.
- 4) Screw the leveling screws into the table base by inserting them up through the caster straps and spacers provided in the hardware package.

**Note: When installing casters verify that both fixed casters are on the same end with brake clamps facing the outside of the table.**



P/N: 006.8030.03  
REV. A